



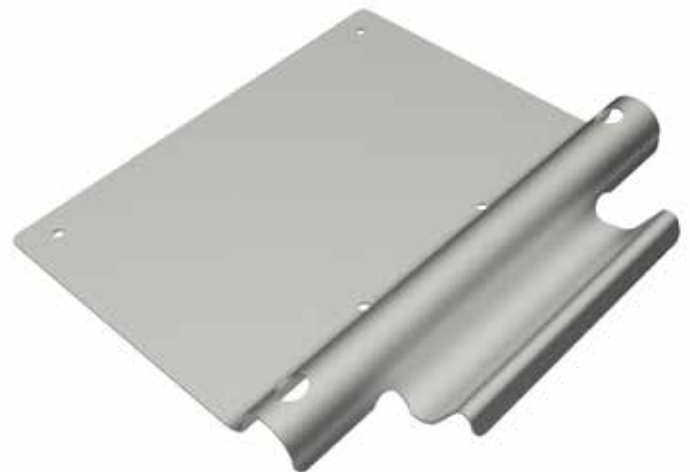
SafetyLink[®]
Innovative
Fall Protection



Fixed LadderLink™

Ladder Stabiliser

SafetyLink's patented Fixed LadderLink is a permanent bracket designed to stabilise your ladder.



SafetyLink[®]
Innovative
Fall Protection

SafetyLink Pty Ltd **1300 789 545**
+61 2 4964 1068 info@safetylink.com

**'Innovative
Fall Protection'**

For further information and to order our products visit our website.

www.safetylink.com



SafetyLink[®]
Innovative
Fall Protection



Ladder**Link** is the essential entry point system to any height safety system. Made from marine grade aluminium the Ladder**Link** is designed to support a ladder, stopping sideways movement and therefore holding the ladder in place safely. In addition the Ladder**Link** has securing points to tie off the ladder providing a safe access point.

Material such as stainless steel when used without a protective membrane have a high corrosive effect on roof sheeting, this exposure when put in direct contact with roof sheeting will dramatically reduce the life expectancy of the sheet due to premature corrosion. Ladder**Link** is easy to install, unobtrusive.

Benefits of choosing Safety**Link**:

Safety**Link**'s Fixed Ladder**Link** has been manufactured from marine grade aluminium, this metal choice not only ensures a durable light weight product for installation, it also has the added advantage of being a compatible metal, with the Ladder**Link**'s large surface area this is certainly an added advantage. Safety**Link** have finished this product off with a protective membrane in the form of a powder coat finish, this ensures your product is ready for any additional colouring you would like to apply.

- ❑ Made from marine grade aluminium.
- ❑ Quick and easy installation.
- ❑ Essential entry point system to stabilise your ladder.

*Safety**Link**'s Fixed Ladder**Link** is a permanent bracket designed to stabilise your ladder. The Fixed Ladder**Link** has securing points to tie off the ladder providing a safe access point, eliminating sideways movement.*

Safety**Link** will provide you with the following:

- ❑ All products tested and manufactured to Australian and New Zealand Standards.
- ❑ All distributors and installers are trained to use Safety**Link** products.
- ❑ Supply installation guides, testing results and product sheets.
- ❑ Products tested using a qualified and reputable testing authority.
- ❑ Supply a large range of roof anchors that protect you from the ground up, allowing complete access to your roof.
- ❑ Installers are qualified to do yearly inspections on your anchors as per Australian and New Zealand Standards.



All Trades Abseiling
PO Box 774, Newport Beach NSW 2106
Ph: 0412 227 578

matt@atasdney.com.au | www.alltradesabseiling.com.au

**'Distributors of
Safety**Link** Products'**

'INNOVATIVE FALL PROTECTION'